

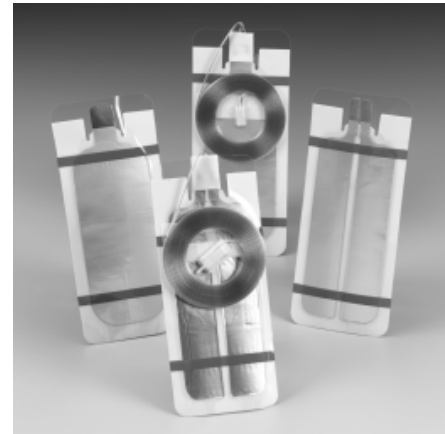
3M™ Electrosurgical Patient Plates 1100 Series

Description

A series of electrosurgical plates that consist of a large conductive adhesive surface area surrounded by a border of non-conductive, pressure-sensitive adhesive. Available in split and solid styles, and in large and small sizes.

Product Benefits

- Foam backing is lightweight and flexible, conforming exceptionally well to body contours.
- Stress flap “ears” secure tab-end of plate to patient and minimize dislodging if cable or cord is pulled inadvertently.
- 3M conductive adhesive provides excellent plate-to-skin contact. It secures the plate safely to patients, yet is comfortable and easy to remove with minimal skin trauma for better patient comfort.
- Non-conductive border adhesive surrounds the conductive area to maintain electrical isolation, ensuring optimal plate-to-skin contact while removing easily with minimal skin irritation.
- Available with pre-attached cords and without cords, in split and solid styles, and in large and small sizes to meet your system and patient needs.



Suggested Applications

- Removes RF current from the patient's body during electrosurgery
- Designed for use with virtually all electrosurgical units (ESUs)

	Product Number	Product Information	Boxes per Case	Units per Case	Billing Unit
--	----------------	---------------------	----------------	----------------	--------------

Non-sterile

	1146	Small solid plate without cord - 25/box	4	100	Case
	1148	Small solid plate with cord - 10/box	4	40	Case
	1149 OEM†	Large solid plate without cord - 25/box	4	100	Case
	1149C OEM†	Large solid plate with cord - 10/box	4	40	Case

	Product Number	Product Information	Boxes per Case	Units per Case	Billing Unit
--	----------------	---------------------	----------------	----------------	--------------

Non-sterile

	1179 OEM†	Large split plate with cord - 10/box	4	40	Case
	1180	Large split plate without cord - 25/box	4	100	Case
	1181	Small split plate with cord - 10/box	4	40	Case
	1182	Small split plate without cord - 25/box	4	100	Case

Sterilization Note: Electrosurgical Plates, though not sterile, may be EO processed outside of kit or placed so as not to jeopardize the sterility of the contents of the pack or tray.

† Indicates adhesive strips for placement on trays.

3M™ Electrosurgical Patient Plates 7100 Series

Description

A series of electrosurgical patient plates with a soft, gel-like, conductive adhesive surrounded by an isolation border on foam backing. Available in split and solid styles, and with or without pre-attached cord.

Product Benefits

- Foam backing is lightweight and flexible, conforming exceptionally well to body contours.
- Stress flap “ears” secure tab end of plate to patient and minimize dislodging if cable or cord is pulled inadvertently.
- 3M's water-based (hydrophilic) conductive adhesive readily flows into skin crevices, providing exceptional pad to skin contact and improving the plate's ability to remain firmly in place. It establishes a very low plate-to-skin impedance, reducing the possibility of alternate site burns.
- Non-conductive border adhesive surrounds the conductive area to maintain electrical isolation, ensuring optimal plate-to-skin contact while removing easily with minimal skin irritation.
- Available with pre-attached cords and without cords, in split and solid styles, and in large and small sizes to meet your system and patient needs.



Suggested Applications

- Removes RF current from the patient's body during electrosurgery
- Designed for use with virtually all electrosurgical units (ESUs)

	Product Number	Product Information	Boxes per Case	Units per Case	Billing Unit
Non-sterile					
	7149	Large solid plate without cord - 25/box	4	100	Case
	7149C	Large solid plate with cord - 10/box	4	40	Case

	Product Number	Product Information	Boxes per Case	Units per Case	Billing Unit
Non-sterile					
	7179 OEM†	Large split plate with cord - 10/box	4	40	Case
	7180	Large split plate without cord - 25/box	4	100	Case

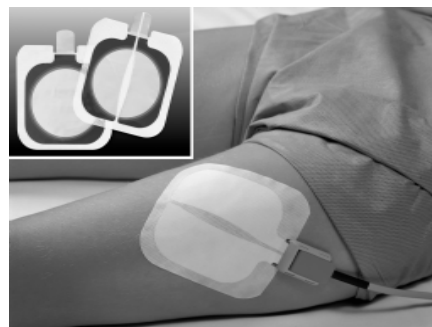
Sterilization Note: Electrosurgical Plates, though not sterile, may be EO processed outside of kit or placed so as not to jeopardize the sterility of the contents of the pack or tray.

† Indicates adhesive strips for placement on trays.

3M™ Universal Electrosurgical Patient Plates - 9100 Series

Description

A series of electrosurgical pads easy to place because of their small size. Smaller size is possible with 3M's patented *Safety Ring* technology. Available as split and solid, with or without pre-attached cords.



Product Benefits

- Smaller size pad offers greater versatility: the 9100 is easier to place because it fits appropriate application sites too small to accept larger pads and requires less area to prep.
- Patented *Safety Ring* technology reduces the clustering of electrosurgical RF current at the leading edge and corners of the pad allowing convenient pad placement in any direction relative to the surgical site (universal orientation).
- As long as the pad makes full contact with the patient, there are no limitations on patient age or weight which could eliminate need for separate inventory of adult and pediatric pads. This also allows for cost-effective standardization on one pad: the 3M Universal Pad.
- Unique, transthermal backing permits heat to escape faster than foam-backed pads reducing risk of unsafe temperature rise. Transthermal backing also provides greater tear resistance for easy removal.
- Water-based, soft, hydrophilic conductive adhesive provides exceptional pad-to-skin contact, flowing uniformly into skin crevices for reliable adhesion.
- Non-conductive border adhesive surrounds the conductive area to maintain electrical isolation.

Suggested Applications

- Removes RF current from the patient's body during electrosurgery.
- Designed for use with virtually all electrosurgical units (ESUs).

	Product Number	Product Information	Boxes per Case	Units per Case	Billing Unit
Non-sterile					
	9130	Solid plate without cord - 100/box	1	100	Case
	9135	Solid plate with cord - 40/box	1	40	Case

	Product Number	Product Information	Boxes per Case	Units per Case	Billing Unit
Non-sterile					
	9160	Split plate without cord - 100/box	1	100	Case
	9165	Split plate with cord - 40/box	1	40	Case
	9165L	Split plate with cord - 40/box	1	40	Case

Sterilization Note: Electrosurgical Plates, though not sterile, may be EO processed outside of kit or placed so as not to jeopardize the sterility of the contents of the pack or tray.